

# **HAFCO**

# **METALMASTER**



Edition : 1.0  
Date: (11/24)

## Instruction Manual

# **SANDBLASTING CABINET**

## **SB-100**

Order Code: (S288)

## DESCRIPTION

This Abrasive Blast Cabinet is designed for cleaning, polishing and finishing with dry abrasive ONLY.

## SPECIFICATIONS

Order Code	S288
<b>MODEL</b>	<b>SB-100</b>
Approx. Inside Cabinet Size (L x W x H)	590 x 500 x 300-360mm
Recommended Free Air Delivery @ 100psi (LPM)	254 LPM
Suggested Operating Air Pressure Range	60 ~ 125psi
Maximum Air Pressure	125psi
Recommended Air Supply	7 ~ 12 CFM
Media Capacity	7.5 Litres
Floor Space with Door Open (L x W x H)	700 x 500 x 950mm
Shipping Dimension	79 x 50 x 93cm
Weight (Nett / Gross)	17.5kg / 19kg

## ACCESSORIES INCLUDED

- Replacement shields
- Gloves
- Blast gun & ceramic tips



## ELECTRICAL INSTALLATION

Place the machine near an existing power source. Make sure all power cords are protected from traffic, material handling, moisture, chemicals, or other hazards. Make sure there is access to a means of disconnecting the power source. The electrical circuit must meet the requirements for 240V.

**NOTE : The use of an extension cord is not recommended as it may decrease the life of electrical components on your machine.**

## ELECTRICAL REQUIREMENTS

Nominal Voltage..... 240V  
 Cycle..... 50 Hz  
 Phase..... Single Phase  
 Power Supply Circuit..... 10 Amps

## BEFORE ASSEMBLING

Please read this instruction manual before assembly.



## UNPACKING

This machine was carefully packaged for safe transport. When unpacking, separate all enclosed items from packaging materials and inspect them for shipping damage. If items are damaged, please contact your distributor.

## IDENTIFICATION

Become familiar with the names and locations of the controls and features shown below to better understand the instructions in this manual.



<b>A</b>	ON/ OFF Switch	<b>F</b>	Air Filter
<b>B</b>	Cabinet	<b>G</b>	12V Work Light
<b>C</b>	Gloves	<b>H</b>	Air Hose Connection
<b>D</b>	Top Access Door	<b>I</b>	Hopper
<b>E</b>	Viewing Window	<b>J</b>	Door Lock

## SPECIFIC SAFETY FOR BLAST CABINETS

DO NOT use this machine unless you have been instructed in its safe use and operation and have read and understood this manual



*Safety glasses must be worn at all times in work areas*



*A mask must be worn when excessive airborne dust is created*



*Sturdy footwear must be worn at all times in work areas*



*Always wear hearing protection when operating this machine.*

**PERSONAL PROTECTION EQUIPMENT.** Media blasting presents a real hazard of silicosis and other lung contamination injuries! These injuries are permanent and can get worse over time. If you use media blasting equipment without the proper head gear, eye protection, and respirator, your lungs and eyes may become permanently damaged. DO NOT use this blast cabinet unless you know how to use it. Protect yourself correctly, and keep all unprotected bystanders away.

ALWAYS use approved protective equipment and acceptable respirator types.

**SAFE MEDIA BLASTING.** Do not use system over the rated PSI or lines and seals may burst and cause injury.

**SAFE DUST EXPOSURE.** To prevent dust exposure, always secure the door(s) before beginning media blasting operations.

**LOADING & UNLOADING.** To prevent accidental blasting injury, disconnect the air supply before loading or unloading the workpiece from the blast cabinet.

**WHEN FINISHED.** To prevent accidental blasting injury, disconnect the air supply when finished with the blast cabinet.

**CORRECT LIGHTING.** To prevent ballast overload and possible fire, only install lamps that are the same voltage and wattage.

**MAINTAINING BLAST CABINET.** To prevent accidental contamination of shop air, check the blast cabinet for any leaks before use, and reseal immediately.

**MAINTAINING COMPONENTS.** To prevent accidental contamination or blast injuries, replace tips, hoses, lenses, and gloves when they become worn.

**FIRE OR EXPLOSION.** DO NOT USE a sand blaster around combustible or flammable liquids, gases, oily rags, or other materials that can explode or burn quickly. Some abrasives create sparks when they hit metal. Abrasives similar to aluminium oxide may generate static electric sparks which will cause fires or explosions in an unsafe environment.

**STATIC ELECTRIC SHOCKS.** Please wear leather or rubber soled shoes or boots and stand on the ground to avoid static electricity. A grounded wire attached to the sand blast gun will safely remove the static electricity.



### **WARNING**

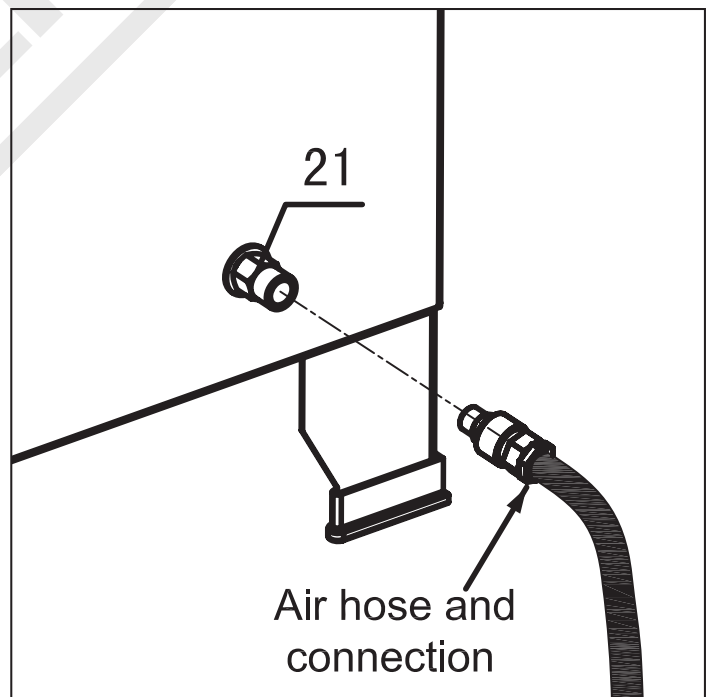
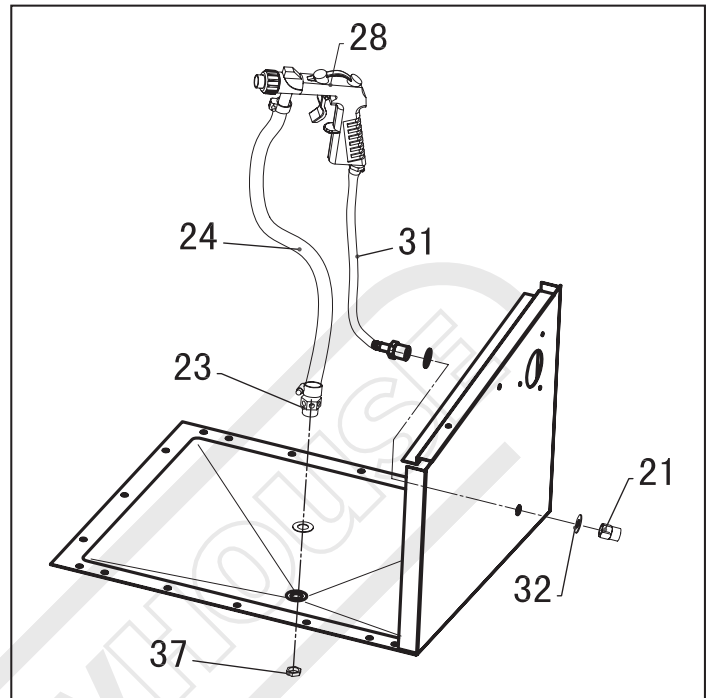
Some dust created by power sanding, sawing, grinding, drilling, and other construction activities contains chemicals known to cause cancer, birth defects or other reproductive harm. Some examples of these chemicals are:

- Lead from lead-based paints.
- Crystalline silica from bricks, cement and other masonry products.
- Arsenic and chromium from chemically-treated lumber.

To reduce your exposure to these chemicals: Work in a well ventilated area with protection.

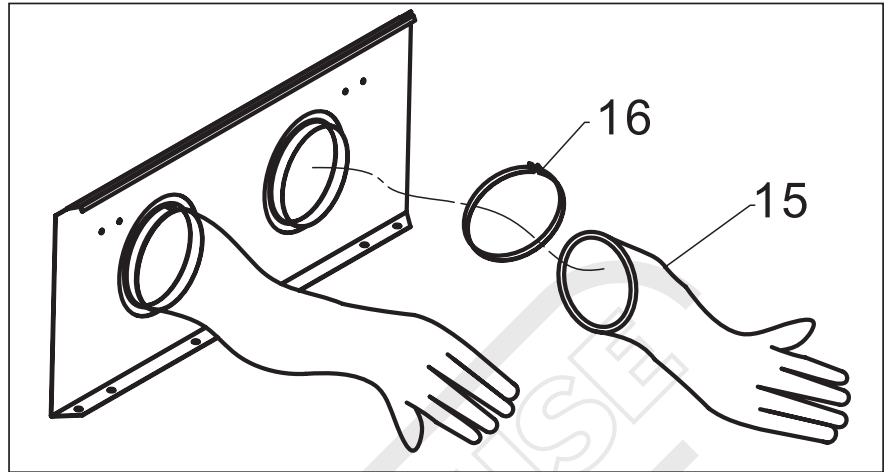
## ASSEMBLY

- STEP 1.** Insert the sand suction adapter (23) into the bottom of the funnel with a flat washer and lock with M16 Nut (37).
- STEP 2.** Place cabinet on a workbench where you will be working.
- STEP 3.** Connect the air supply (max. 125psi) to the air fitting (21) on the side of the cabinet.
- STEP 4.** Plug the 12V power supply into a 240V wall outlet. Ensure the switch is in the OFF position, plug the other end of 12V power supply cord into the light switch on the cabinet.
- STEP 5.** Check if the light works.
- STEP 6.** Add a plastic window protector to the inside surface of the glass door.
- STEP 7.** Eye protection must be worn before loading the sand blaster with abrasive grit. To ensure effective performance, you should load no more than 7.4 liters into the cabinet.
- STEP 8.** Close the door latches (18).
- STEP 9.** Protect your hands in gloves (15), aim blast gun (28) at surface to be cleaned and pull trigger. If there is no flow, please clear the tube by covering the gun nozzle.

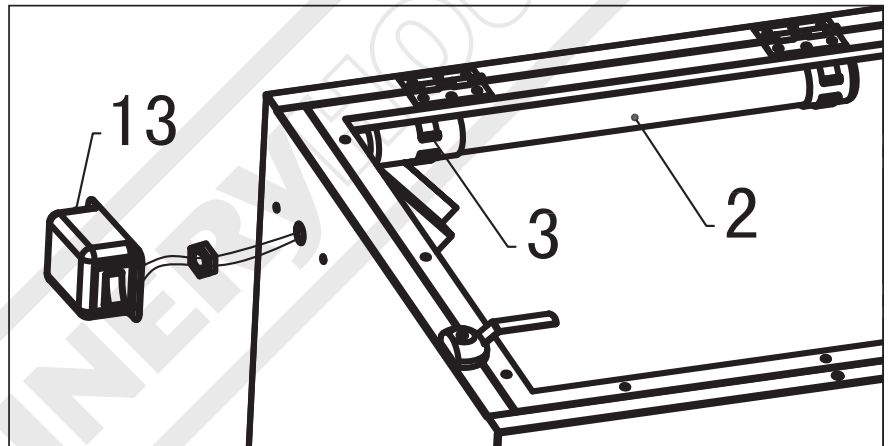


## MAINTENANCE

Secure the glove (15) with glove clamp (16) onto the front panel as illustrated below.



Push the lamp (2) forward into lamp clip (3). Then put the enclosed on the cord to secure the hole through left panel.

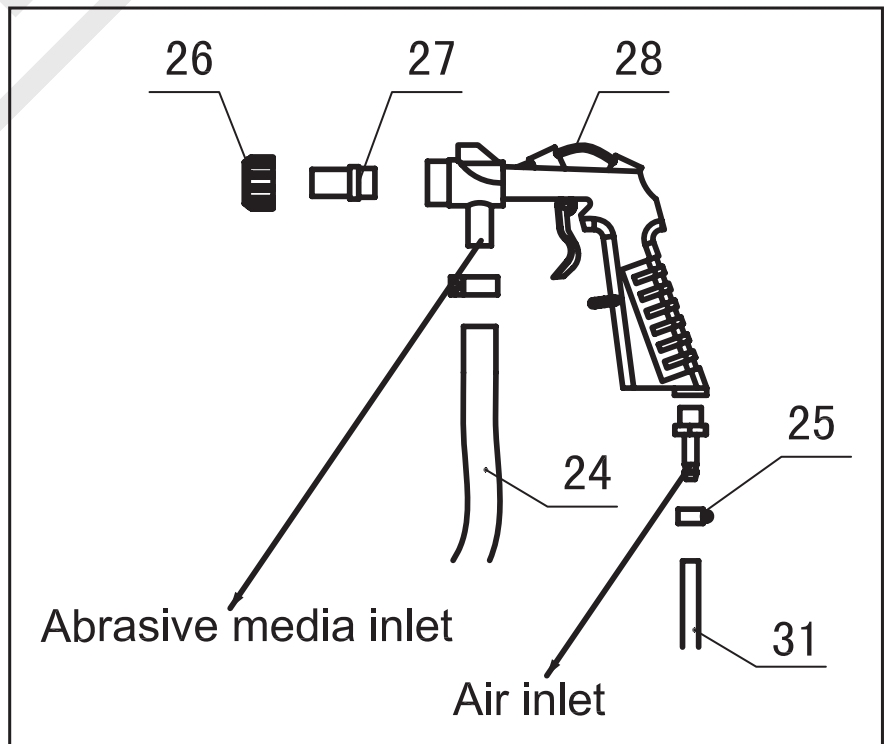


**NOTE:** Disconnect power and air before maintenance.

**Cleaning:** Please clean the plastic door or parts with a soft cloth. DO NOT use solvents to clean.

**Avoiding Block:** The moist media will cause the block of nozzle. Try dislodging the media with a drill bit.

**Blast Gun Connection:** Please assemble them as picture shown, when a blast gun (28) need to be replaced.



## TROUBLESHOOTING CHART

Symptom (s)	Possible Causes(s)	Corrective Action(s)
Excessive dust in the cabinet	<ol style="list-style-type: none"> <li>1. Exhaust vent or air flow block.</li> <li>2. Air fittings and connections loosening.</li> <li>3. Overload abrasive media inside of the cabinet.</li> </ol>	<ol style="list-style-type: none"> <li>1. Clean the vent and keep it away from any wall.</li> <li>2. Tighten fittings and make sure all the connections are secure.</li> <li>3. Remove the excessive media.</li> </ol>
Uneven blasting actions	<ol style="list-style-type: none"> <li>1. Moisture present inside of the cabinet.</li> </ol>	<ol style="list-style-type: none"> <li>1. See Caution in General Safety Information.</li> </ol>
Improper speed or Inefficient blast	<ol style="list-style-type: none"> <li>1. Abrasive media worn.</li> <li>2. Pressure too low.</li> </ol>	<ol style="list-style-type: none"> <li>1. Replace media</li> <li>2. Increase inlet pressure and make sure control valve is fully opened.</li> </ol>
Gun will not shut off Trigger stuck	Damaged o-rings in air valve	Remove and replace o-rings.

# SPARE PARTS SECTION

## HOW TO ORDER SPARE PARTS

1. Have your machines model number, serial number & date of manufacture on hand, these can be found on the specification plate mounted on the machine

**NOTE: SOME PARTS MAY ONLY BE AVAILABLE AS AN ASSEMBLY**

2. Go to [www.machineryhouse.com.au/contactus](http://www.machineryhouse.com.au/contactus) and fill out the inquiry form

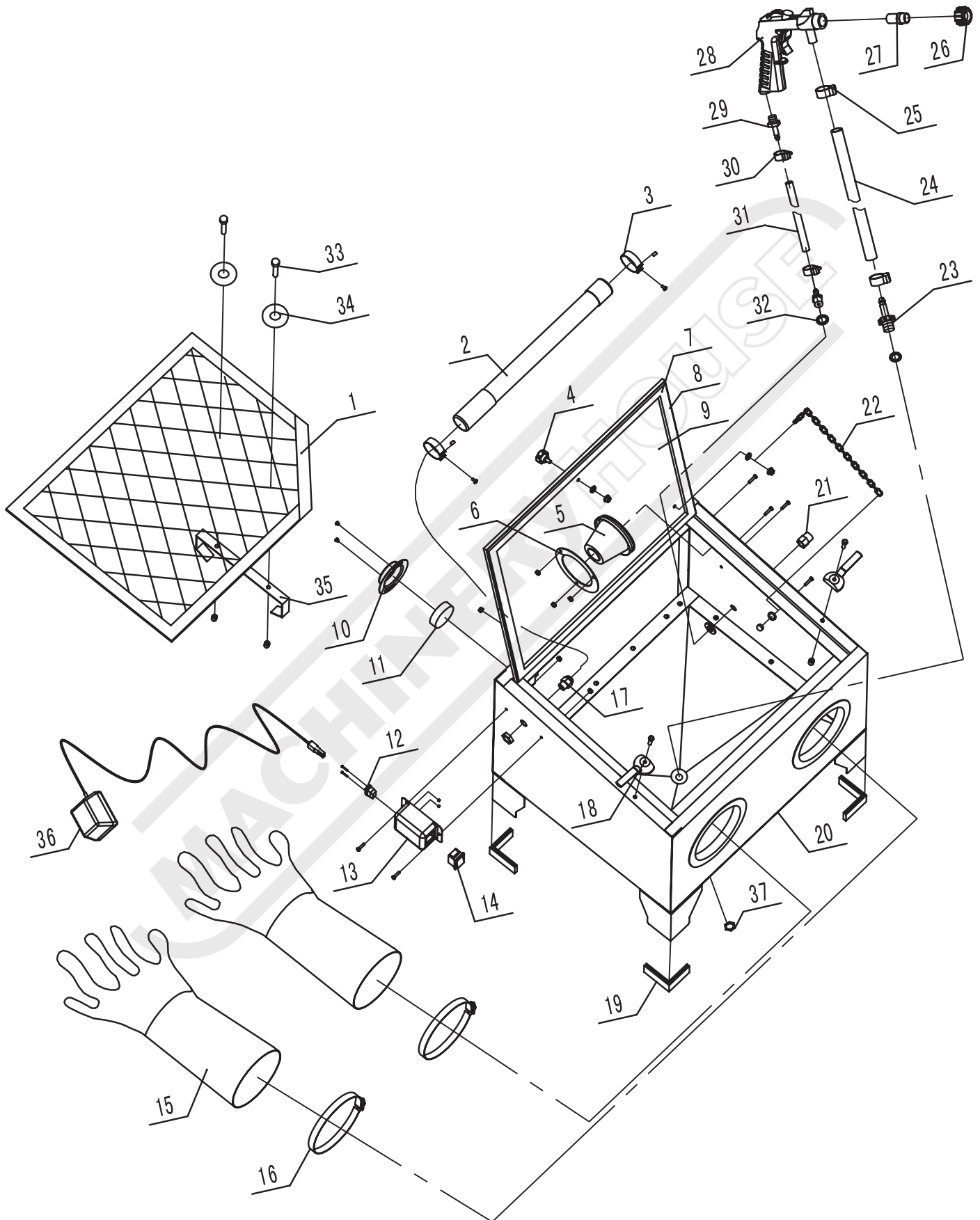


### **WARNING**

*Always disconnect the power to the machine before servicing or doing maintenance to the machine.*



**SPARE PARTS DIAGRAM**



## SPARE PARTS LIST

Part No.	Description	QTY
1	Steel Screen	1
2	Lamp	1
3	Lamp Clip	2
4	Knob	2
5	Filter	1
6	Retaining Ring	1
7	Glass	1
8	Foam Pad	1
9	PE Film	1
10	Filter Housing	1
11	Cabinet Filter	1
12	Switch Outlet	1
13	Lamp Switch Box	1
14	Lamp Switch	1
15	Gloves	1 Pair
16	Large Hose Clamp	2

Part No.	Description	QTY
17	Plastic Feed Through	1
18	Door Latch	2
19	Foot Cover	4
20	Cabinet	1
21	Air Adapter Nut	1
22	Chain	1
23	Sand Suction Adapter	1
24	Abrasive Intake Hose	1
25	Large Hose Clamp	2
26	Nozzle Adapter Nut	1
27	Nozzle Sets	4
28	Blasting Gun	1
29	Air Hose Adapter	1
30	Small Hose Clamp	2
31	Air Inlet Suction	1
32	Flat Washer	6
33	Screw M6x15	2
34	Flat Washer	6
35	Rack Leg	1
36	AC Adapter	1
37	M16 Nut	1

# WARNING

## General Machinery Safety Instructions

---

Machinery House  
requires you to read this entire Manual before using this machine.

- 1. Read the entire Manual before starting machinery.** Machinery may cause serious injury if not correctly used.
- 2. Always use correct hearing protection when operating machinery.** Machinery noise may cause permanent hearing damage.
- 3. Machinery must never be used when tired, or under the influence of drugs or alcohol.** When running machinery you must be alert at all times.
- 4. Wear correct Clothing.** At all times remove all loose clothing, necklaces, rings, jewelry, etc. Long hair must be contained in a hair net. Non-slip protective footwear must be worn.
- 5. Always wear correct respirators around fumes or dust when operating machinery.** Machinery fumes & dust can cause serious respiratory illness. Dust extractors must be used where applicable.
- 6. Always wear correct safety glasses.** When machining you must use the correct eye protection to prevent injuring your eyes.
- 7. Keep work clean and make sure you have good lighting.** Cluttered and dark shadows may cause accidents.
- 8. Personnel must be properly trained or well supervised when operating machinery.** Make sure you have clear and safe understanding of the machine you are operating.
- 9. Keep children and visitors away.** Make sure children and visitors are at a safe distance for you work area.
- 10. Keep your workshop childproof.** Use padlocks, Turn off master power switches and remove start switch keys.
- 11. Never leave machine unattended.** Turn power off and wait till machine has come to a complete stop before leaving the machine unattended.
- 12. Make a safe working environment.** Do not use machine in a damp, wet area, or where flammable or noxious fumes may exist.
- 13. Disconnect main power before service machine.** Make sure power switch is in the off position before re-connecting.
- 14. Use correct amperage extension cords.** Undersized extension cords overheat and lose power. Replace extension cords if they become damaged.
- 15. Keep machine well maintained.** Keep blades sharp and clean for best and safest performance. Follow instructions when lubricating and changing accessories.
- 16. Keep machine well guarded.** Make sure guards on machine are in place and are all working correctly.
- 17. Do not overreach.** Keep proper footing and balance at all times.
- 18. Secure workpiece.** Use clamps or a vice to hold the workpiece where practical. Keeping the workpiece secure will free up your hand to operate the machine and will protect hand from injury.
- 19. Check machine over before operating.** Check machine for damaged parts, loose bolts, Keys and wrenches left on machine and any other conditions that may effect the machines operation. Repair and replace damaged parts.
- 20. Use recommended accessories.** Refer to instruction manual or ask correct service officer when using accessories. The use of improper accessories may cause the risk of injury.
- 21. Do not force machinery.** Work at the speed and capacity at which the machine or accessory was designed.
- 22. Use correct lifting practice.** Always use the correct lifting methods when using machinery. Incorrect lifting methods can cause serious injury.
- 23. Lock mobile bases.** Make sure any mobile bases are locked before using machine.
- 24. Allergic reactions.** Certain metal shavings and cutting fluids may cause an allergic reaction in people and animals, especially when cutting as the fumes can be inhaled. Make sure you know what type of metal and cutting fluid you will be exposed to and how to avoid contamination.
- 25. Call for help.** If at any time you experience difficulties, stop the machine and call you nearest branch service department for help.

# WARNING

## Sandblast Cabinet Safety Instructions

---

Machinery House  
requires you to read this entire Manual before using this machine.

- 1. Maintenance.** Make sure the Sandblast Cabinet is turned off and disconnect from the air & main power supply before any inspection, adjustment or maintenance is carried out. Clean dust collection and filters often and repair any suction hose leaks immediately. Replace nozzles, hoses, lenses and gloves when become worn. Check the cabinet for any leaks, and reseal immediately.
- 2. Correct abrasives.** Never use wet abrasives in this Sandblast Cabinet. It is designed for dry abrasives only.
- 3. Leaving a Sandblast Cabinet Unattended.** Always turn the Sandblast Cabinet off before leaving the Sandblast Cabinet. Do not leave the Sandblast Cabinet running unattended for any reason.
- 4. Protecting environment.** Keep Sand blast doors shut when not in use.
- 5. Understand the machines controls.** Make sure you understand the use and operation of all controls.
- 6. Power outage.** In the event of a power failure during use of the machine, turn off all switches to avoid possible sudden start up once power is restored.
- 7. Sandblast Cabinet kPa capacity.** Never use this Sandblast Cabinet over the rated PSI rating.
- 8. Changing the Workpiece.** Disconnect the air supply before loading and unloading the workpiece from the Sandblast Cabinet.
- 9. Hearing protection and hazards.** Always wear hearing protection as noise generated from Sandblast Cabinet and workpiece vibration can cause permanent hearing loss over time.
- 10. Eye protection.** Always wear safety glasses when using and cleaning this machine.
- 11. Before sandblasting lock doors.** Always lock cabinet doors shut before beginning sandblasting.
- 12. Dust hazard.** Sandblasting causes hazardous dust, which may cause long term respiratory problems if inhaled. Always use a dust collector when using the machine.
- 13. Ensure** the label and Safety Data Sheets (SDS) of all abrasive blasting mediums used is checked for suitability and safe use and any extra control measures needed are put in place before their use.
- 14. Call for help.** If at any time you experience difficulties, stop the machine and call you nearest branch service department for help.

# PLANT SAFETY PROGRAM

## **NEW MACHINERY HAZARD IDENTIFICATION, ASSESSMENT & CONTROL**

### **Sandblast Cabinet**

Developed in Co-operation Between A.W.I.S.A and Australia Chamber of Manufactures

This program is based upon the Safe Work Australia, Code of Practice - Managing Risks of Plant in the Workplace ( WHSA 2011 No10 )

Item No.	Hazard Identification	Hazard Assessment	Risk Control Strategies <small>(Recommended for Purchase / Buyer / User)</small>
F	STRIKING	LOW	Make sure all guards and doors are secured shut when machine is on.
G	HIGH PRESSURE AIR	MEDIUM	Make sure all guards and doors are secured shut when machine is on. Disconnect air supply to machine prior to checks or maintenance.
H	ELECTRICAL	MEDIUM	All electrical enclosures should only be opened with a tool that is not to be kept with the machine.
O	OTHER HAZARDS, NOISE, DUST.	MEDIUM	Wear hearing protection as required. Wear safety glasses as required. Ensure Sandblast Cabinet is connected to appropriate Dust Collector as required Ensure the label and safety Data Sheet (SDS) of all Abrasive Blasting Mediums used are checked to be suitability and Not Containing Restricted Hazardous Chemicals above Regulatory Safety Levels. Also ensure Safe use and any extra control measures needed are put in place before their use.



Plant Safety Program to be read in conjunction with manufactures instructions



[www.machineryhouse.com.au](http://www.machineryhouse.com.au)



[www.machineryhouse.co.nz](http://www.machineryhouse.co.nz)

Authorised and signed by:   
Safety officer: .....  
Manager:  .....

Revised Date: 7th June 2016



### ENVIRONMENT PROTECTION

Recycle unwanted materials instead of disposing of them as waste. All tools, accessories and packaging should be sorted, taken to a recycling centre and disposed of in a manner which is compatible with the environment. When the product becomes completely unserviceable and requires disposal, drain any fluids (if applicable) into approved containers and dispose of the product and fluids according to local regulations.

Imported by

**HARE & FORBES**  
**MACHINERYHOUSE**

Australian Distributor

**Hare & Forbes**  
**Machineryhouse**  
Sydney - Melbourne  
Adelaide - Brisbane - Perth

Ph: 1300 202 200  
[www.machineryhouse.com.au](http://www.machineryhouse.com.au)

**MACHINERYHOUSE**

New Zealand Distributor

**Machineryhouse**  
Auckland  
Christchurch

Ph: 0800 142 326  
[www.machineryhouse.co.nz](http://www.machineryhouse.co.nz)